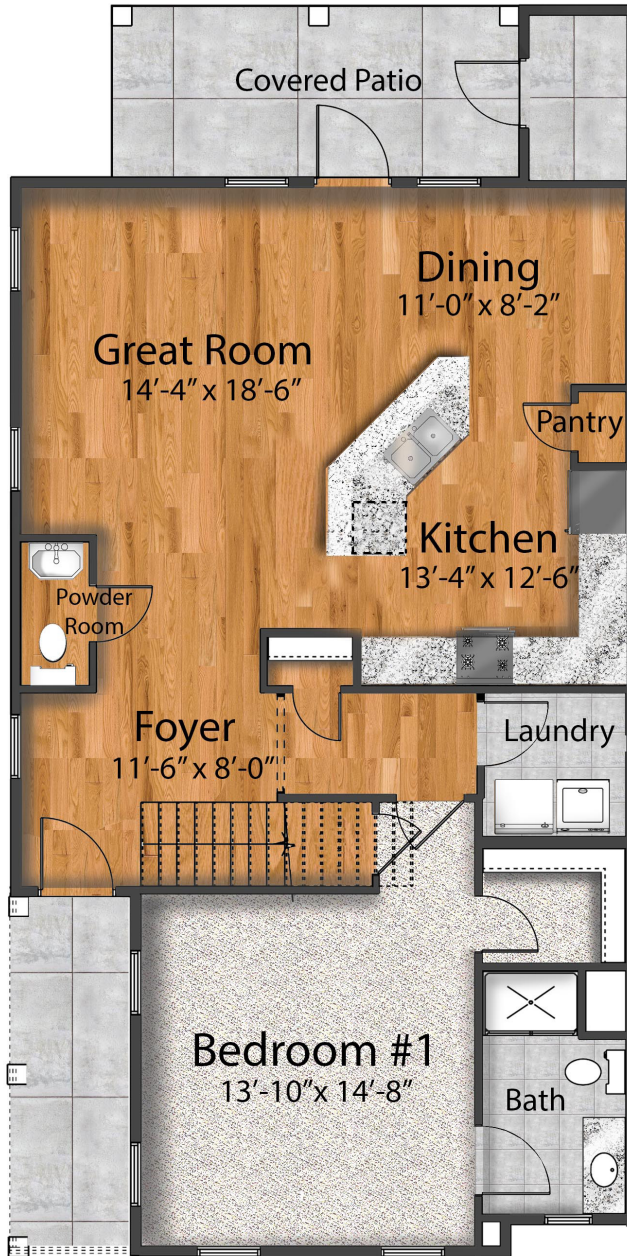


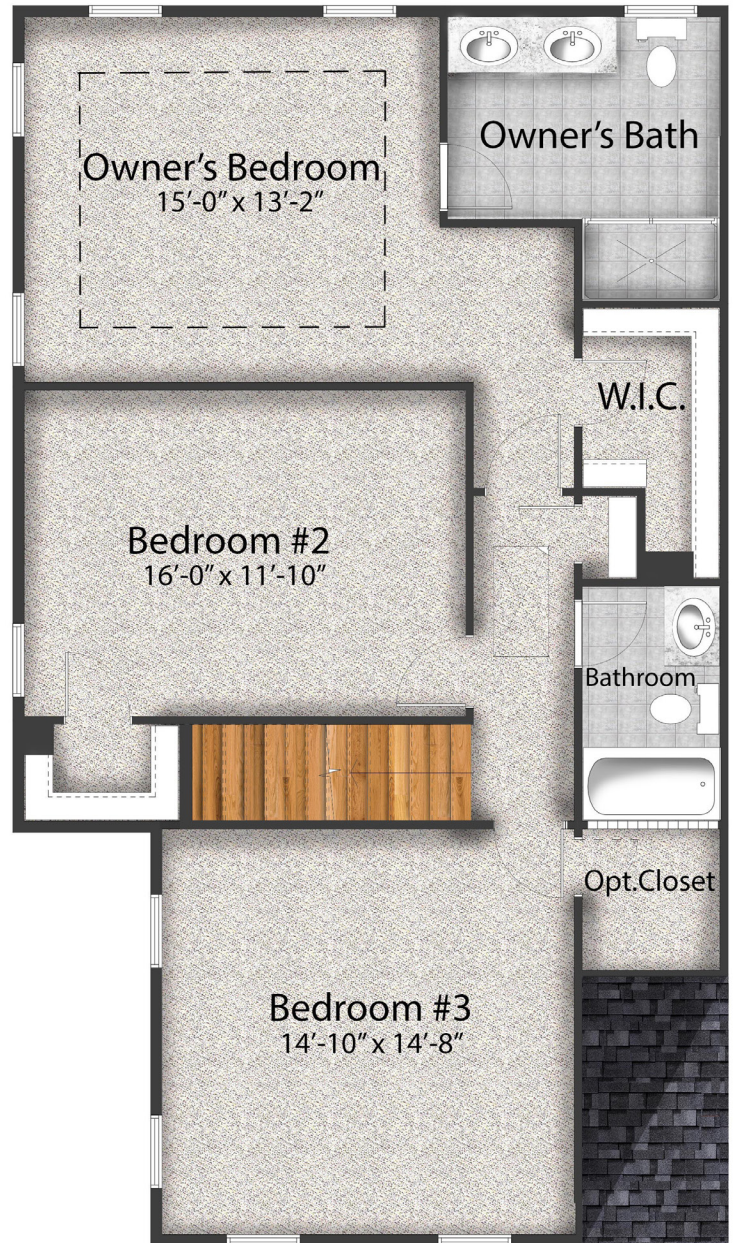


# BELMONT A

4 Bedrooms | 3.5 Baths | 1<sup>st</sup> Floor Bedroom  
2,070 SF



First Floor



Second Floor

Lots 6, 10, 11, 15



# BELMONT A INCLUDED FEATURES

## INTERIOR FINISHES:

- 1st Floor Bedroom with Full Bath
- Open Floor Plan with 9' Ceilings on the First Floor
- Tray Ceiling in Owner's Bedroom
- Sherwin Williams Wall Paint (3) Designer Color Choices with Semi Gloss "White" Trim and Doors
- LED Flush Mount Recessed Ceiling Lights in the Foyer, Great Room, Kitchen, Hall and Stairs
- Two Pendant Lights over Island
- 52" Ceiling Fan with Light Fixture in the Great Room
- Progress Lighting™ Light Fixtures

## CUSTOM TRIM FINISHES:

- Base Molding: 1 x 6 Pre-Primed Pine
- Door Casing: 1 x 4 Pre-Painted Pine with 5/4 Header & Accent
- Interior Doors: Jeld Wen Santa Fe Two Panel

## KITCHEN:

- KCD, The Premier Series, Birchwood with Full Overlay
  - ◊ 42" High Shaker Cabinets
  - ◊ Crown Molding
  - ◊ Soft Close Doors and Drawers
  - ◊ Decorative Handles
- Island Bar with Custom Trim and Overhang
- Color Choices:
  - ◊ Brooklyn Bright White | Brooklyn Modern Gray | Shaker Designer White | Shaker Espresso | Napa White
- Granite Countertops
- Pantry Closet
- Under—Counter Deep Single Bowl Stainless Steel Sink
- Moen® Single Handle Stainless Steel Faucet with Pullout Sprayer

## FRIGIDAIRE® STAINLESS STEEL APPLIANCES:

- Side-by-Side Refrigerator
- Smooth Top Range
- Dishwasher
- Built-in Microwave

## OWNER'S BATH:

- KCD, The Premier Series, Birchwood with Full Overlay
- Shaker Espresso Vanity with Soft Close Doors and Drawers
- Custom Ceramic Tile Shower with Custom Frameless Clear Glass Enclosure
  - ◊ Floridatile, Ainslee Park Color Calacatta—white and gray marble look
  - ◊ 12" x 24" Tile Shower Walls to Ceiling, Bricklay
  - ◊ 2" x 2" Mosaic Shower Floor
  - ◊ 1 Corner Shelf and 1 Corner Seat
  - ◊ 12" x 24" Bath Room Floor, Bricklay
- Moen® "Eva" Brush Nickel, 8" spread Faucets, Showerhead, Handheld Shower Slider Bar and Accessories
- Pure White Cultured Marble Countertops with Integrated Wave Bowl Sinks
- Plate Glass Mirror
- Comfort Height Elongated Toilet

## 1<sup>ST</sup> BEDROOM BATH AND HALL BATH:

- KCD, The Premier Series, Birchwood with Full Overlay
- Shaker Espresso Vanity with Soft Close Doors and Drawers
- Shower Surround in 1st Bedroom Bath
- Tub Shower Surround in Hall Bath
- Moen "Eva" Brush Nickel, Faucets and Accessories
- Ceramic Tile Floor
  - ◊ Floridatile, Craftsman or Westmont 12" x 12"
- Pure White Cultured Marble Countertops with Integrated Wave Bowl Sink
- Plate Glass Mirror
- Elongated Toilet

## POWDER ROOM:

- White Pedestal Sink
- Moen® "Eva" Brush Nickel, Faucets and Accessories
- Framed Mirror
- Elongated Toilet

## LAUNDRY ROOM:

- Ceramic Tile Floor
  - ◊ Floridatile, Craftsman or Westmont 12" x 12"

## FLOORING:

- Foyer, Great Room, Kitchen, Dining, Powder Room and Staircase Landing
  - ◊ SAR Floors Titan Collection LVT Plank Flooring
  - ◊ LVT Hardwood 7" x 48" Plank Flooring
  - ◊ Waterproof, AmourGuard™, Tri-Core ESPC™, QuiteStep Cushion™ and Pet Friendly
- Owner's Bedroom, 1st Bedroom, 2nd Bedroom and Upstairs Hall
  - ◊ Mohawk Carpet—Portico Collection, Calming Option
  - ◊ SmartStrand FOREVER CLEAN Unique built-in stain and soil protection that won't wear or wash off

## STAIRS AND RAILINGS:

- The Treads and Oak Handrails will be Stained to coordinate with the Floor
- The Risers and Stringers will be painted White
- The Balusters are Satin Black Iron

## HVAC:

- Goodman Natural Gas Furnace
- Goodman High Efficiency Central Air
- Electronic Zoning System
- Programmable Thermostats

## INSULATION:

- R-15 Batt Fiberglass Insulation in Walls
- R-10 Slab
- R-38 Blown-In Fiberglass Insulation in Ceiling

## ADDITIONAL FEATURES:

- Prewired for Security System
- Ventilated Vinyl Coated White Shelving in Closets & Linen
- Structured Wiring with CAT5 & RG6
- Circuit Breaker Panel 200 amp
- Exterior Hose Bibs
- Exterior Weather Protected Electrical Outlets
- 50 Gallon Electric Water Heater
- Two Driveway Parking Spaces
- Professionally Designed Landscape Package and Bermuda Sod

*Patios and Storage Unit configurations and sizes may vary on all Units. Due to field conditions, rolling and/or sloping lots, some units may have wood decks in lieu of patios.*

*Prices, specification, including features and available options are subject to change at any time without notice.*